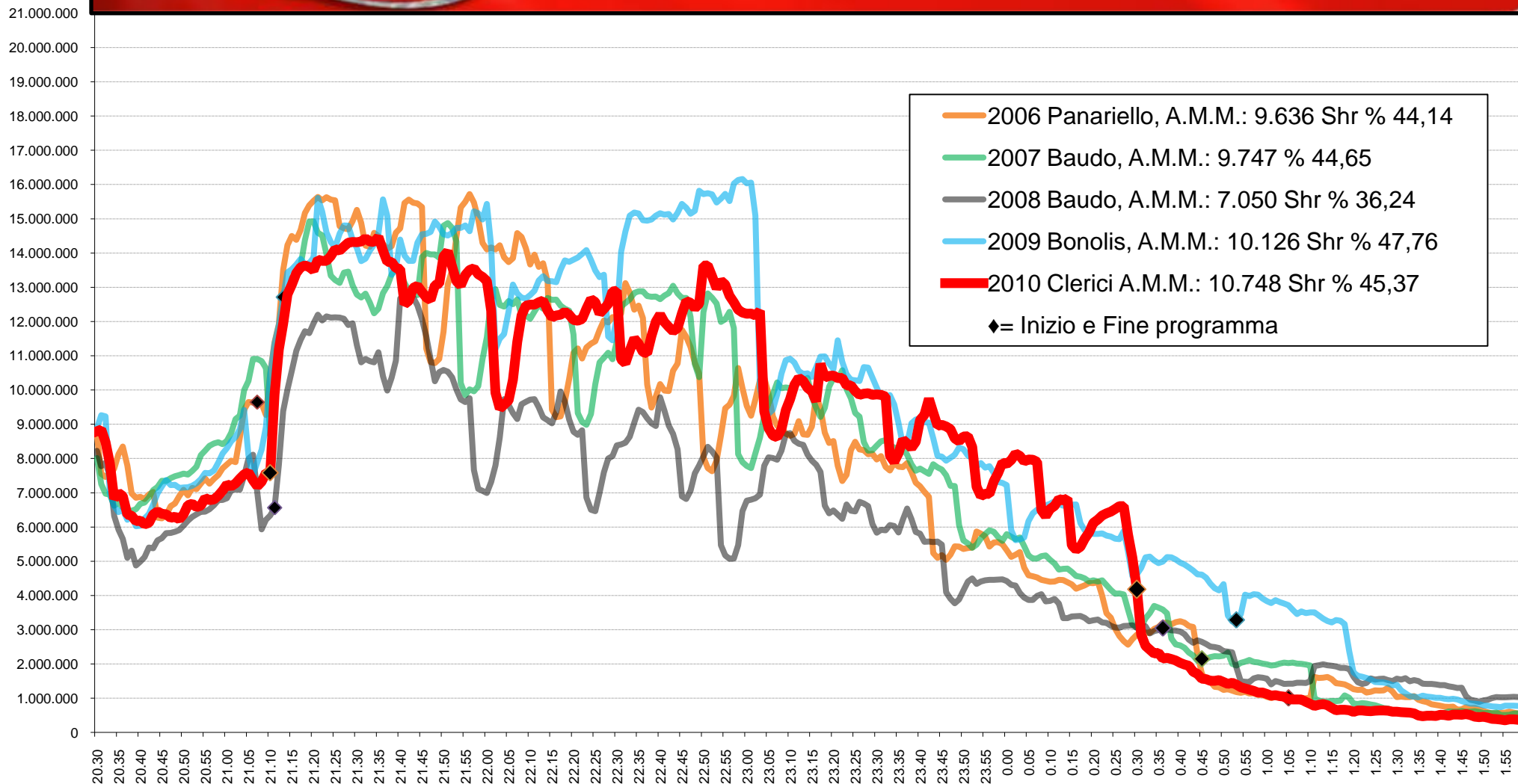
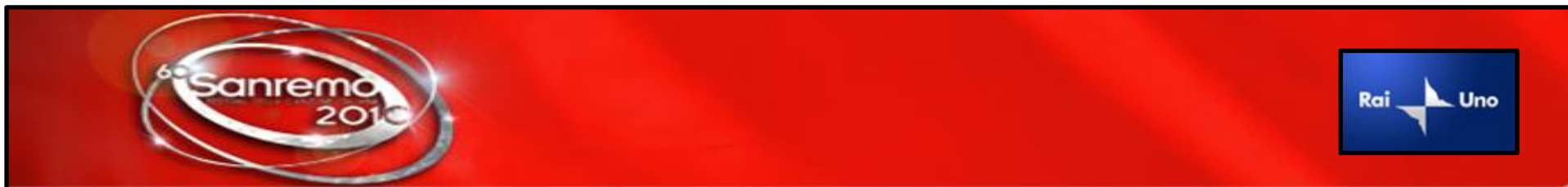


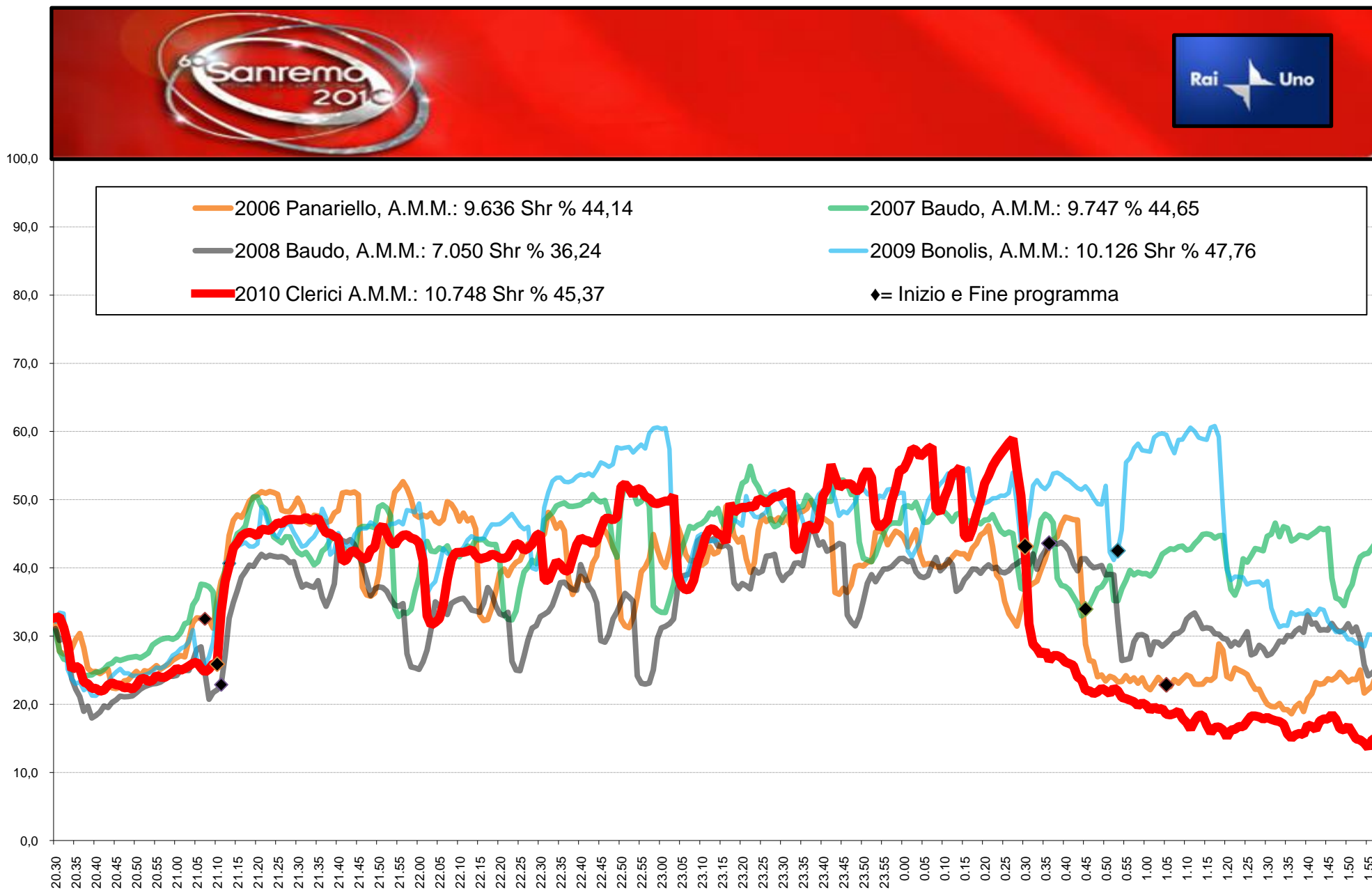
**I grafici di ascolto
16-20 Febbraio 2010
delle 5 serate di:**



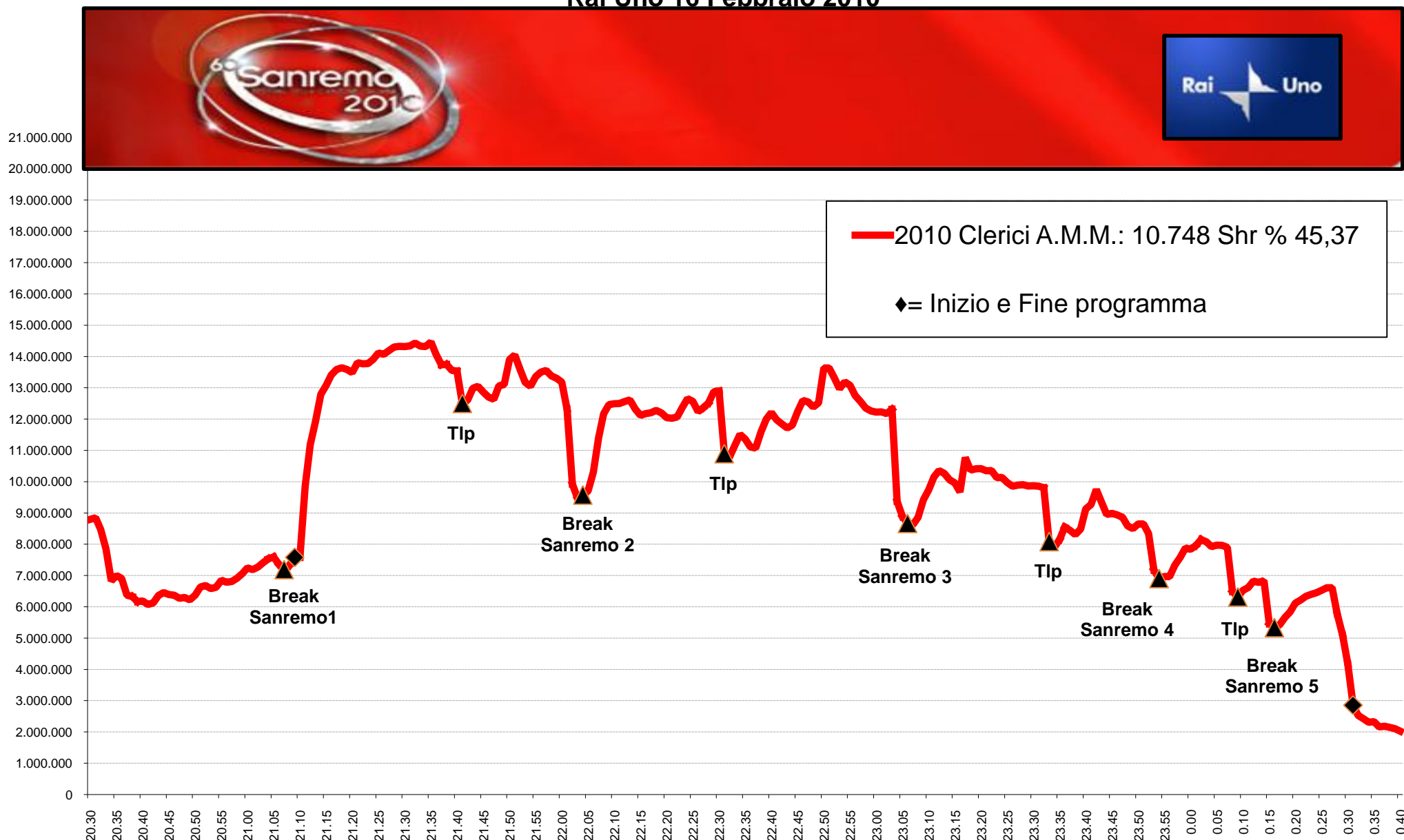
Confronto Audiences andamento Prima serata Sanremo 2006-2010



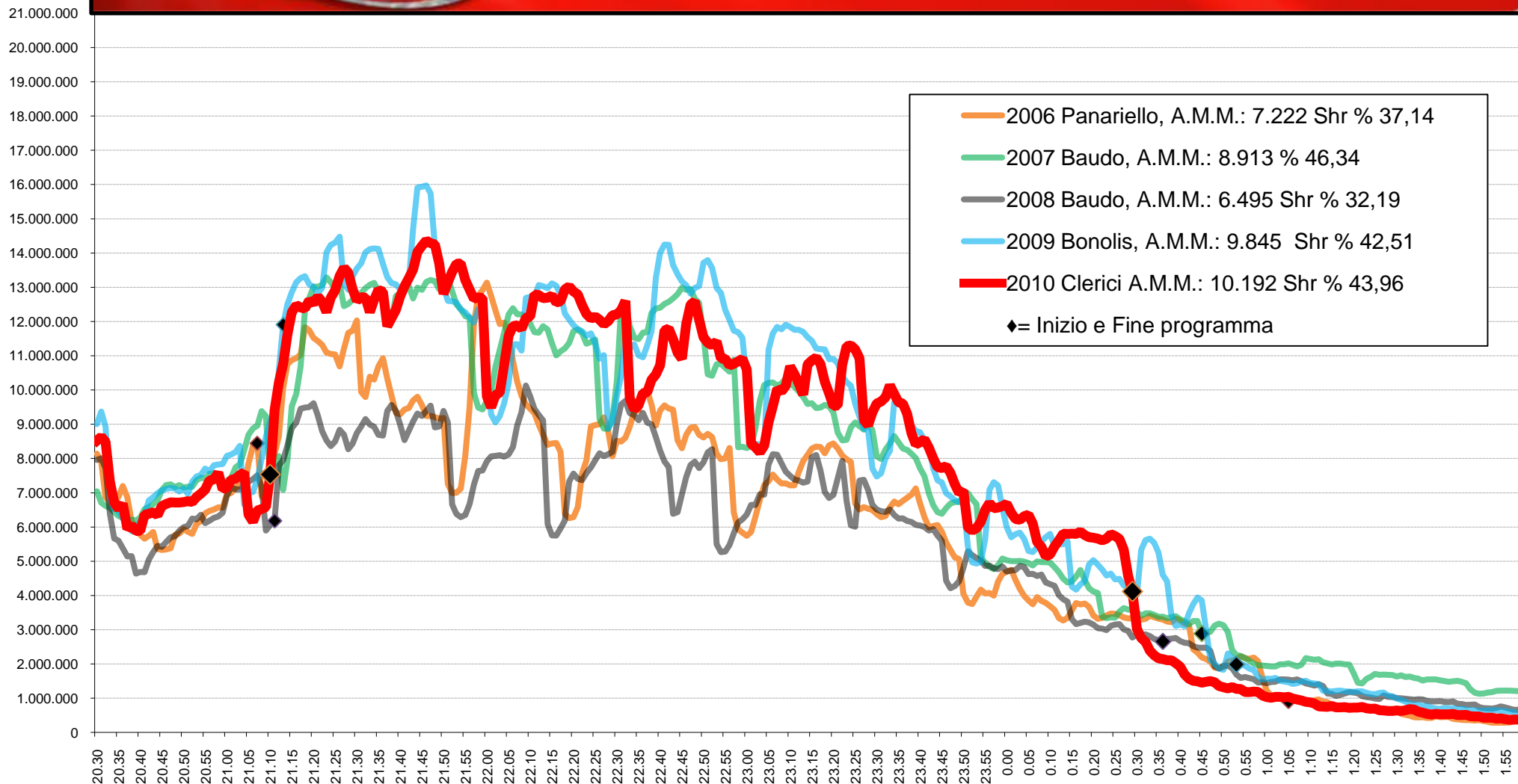
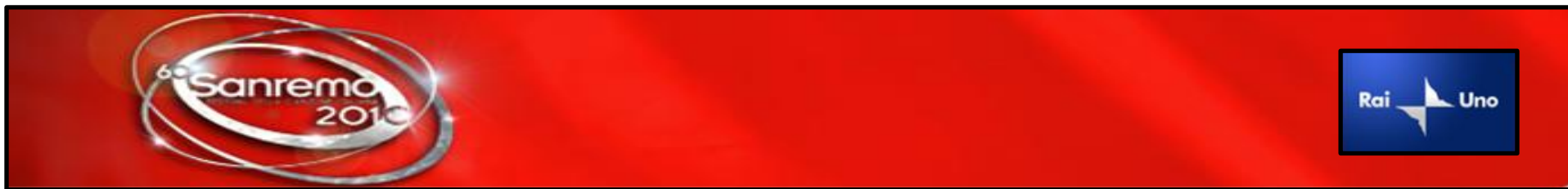
Confronto Shares % andamento Prima serata Sanremo 2006-2010



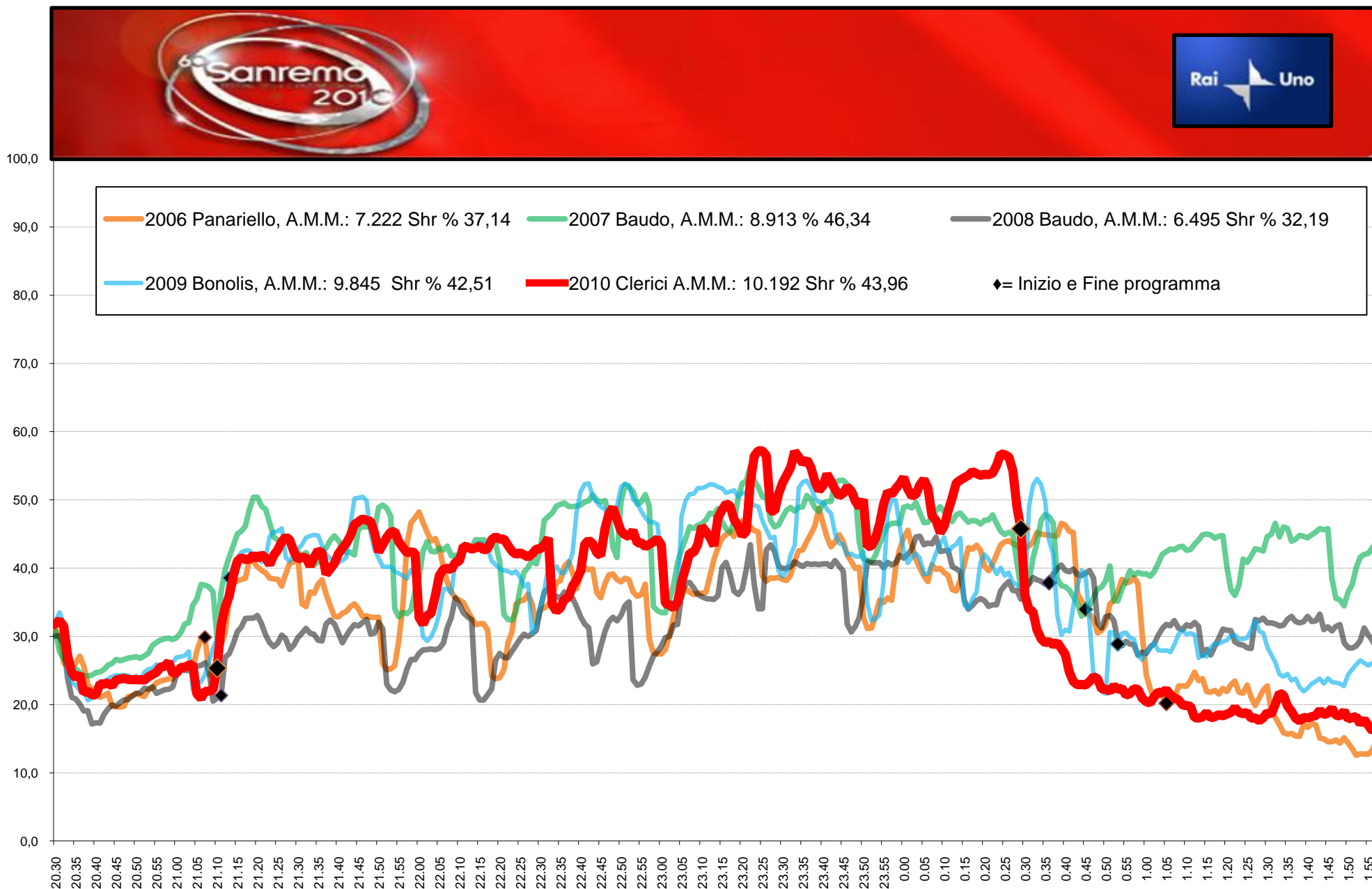
**Interruzioni pubblicitarie
Prima serata Sanremo
Rai Uno 16 Febbraio 2010**



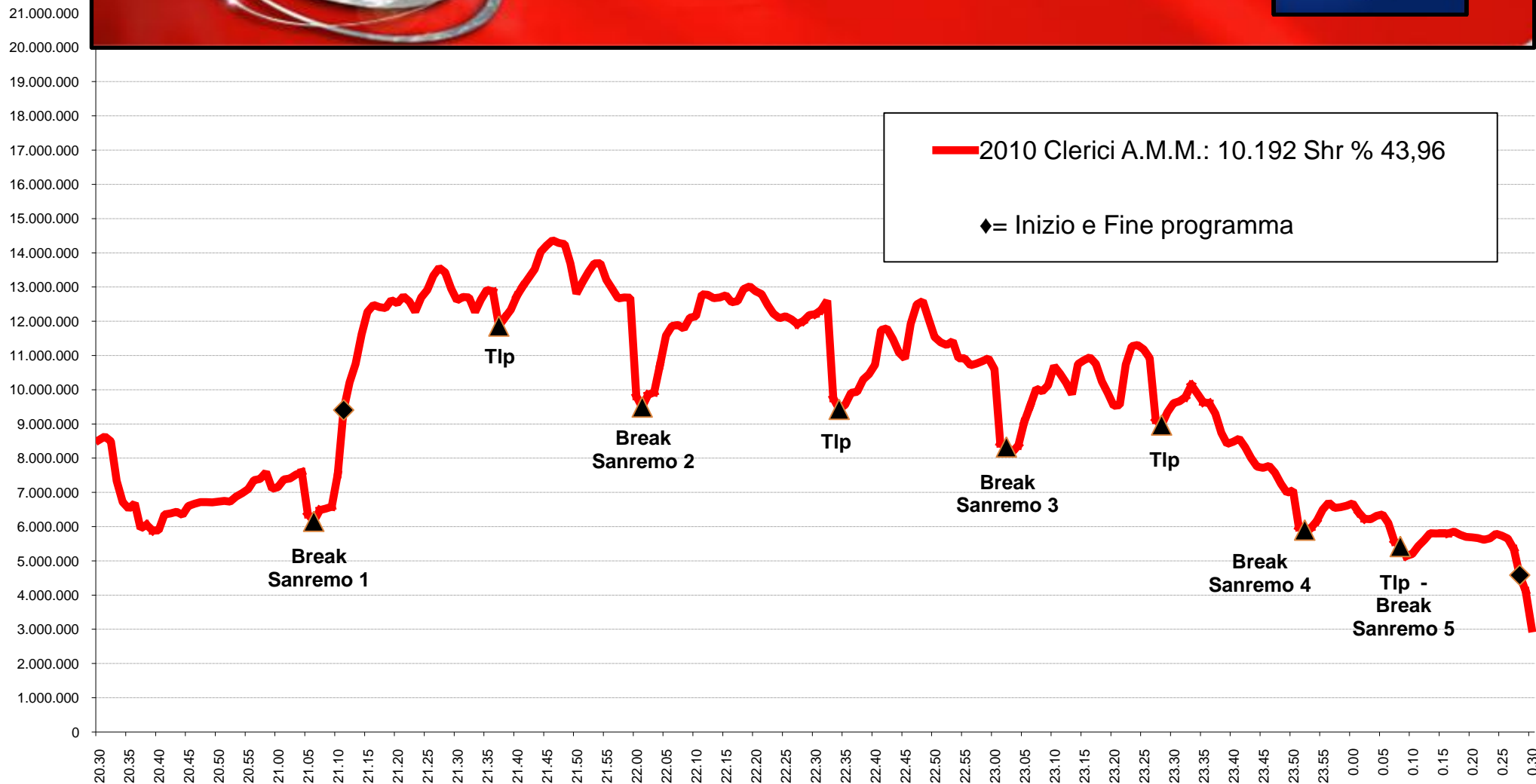
Confronto Audiences andamento Seconda serata Sanremo 2006-2010



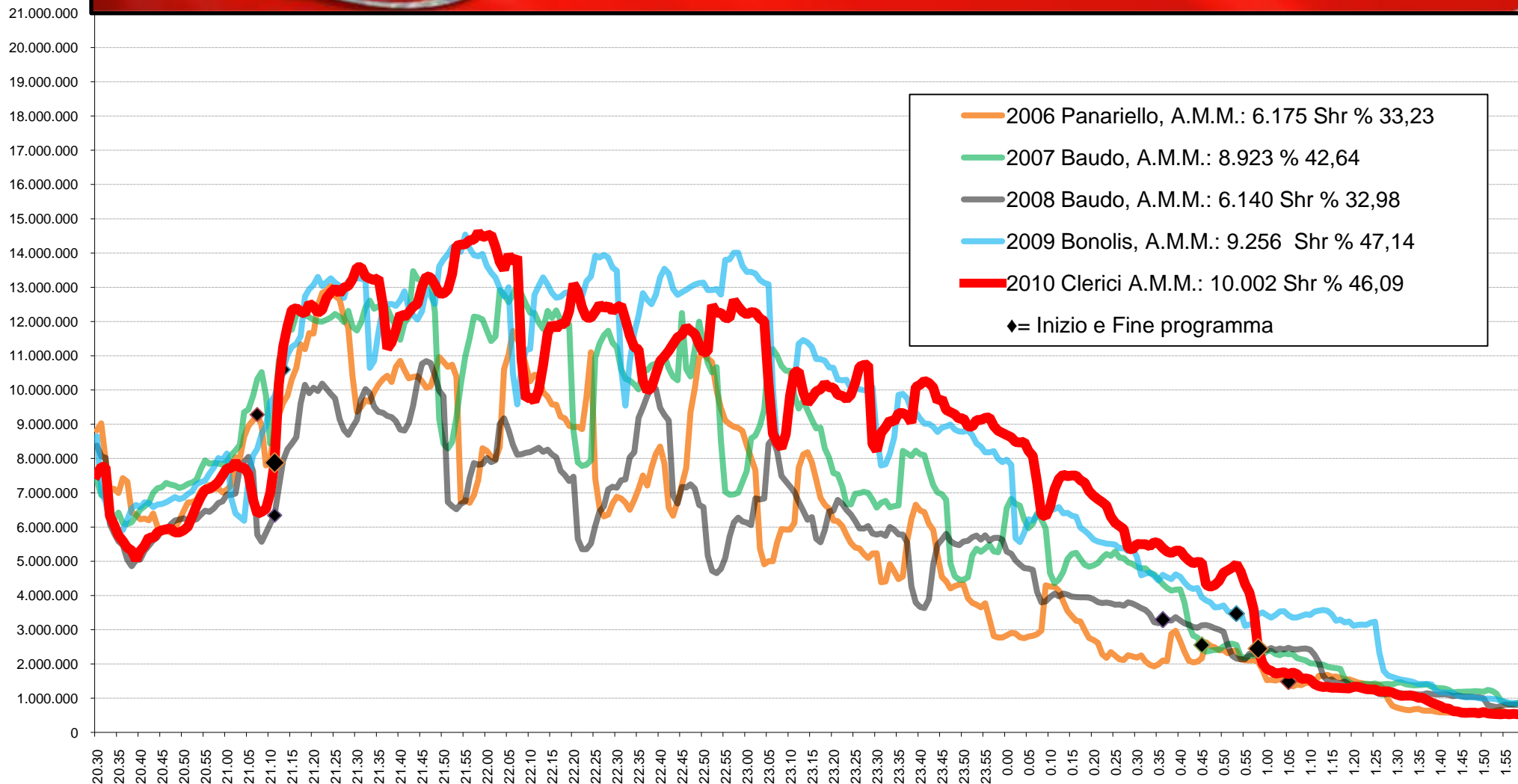
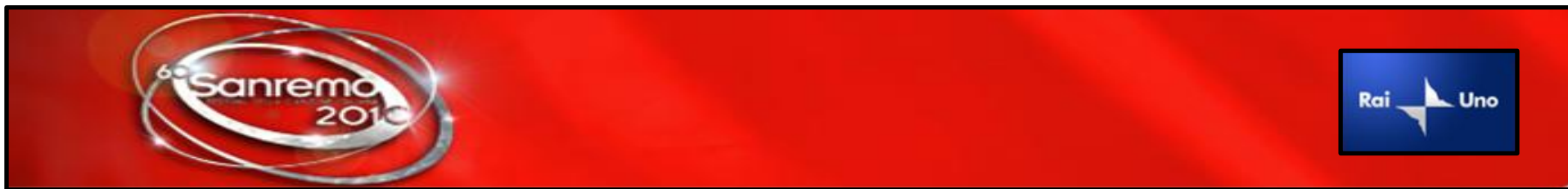
Confronto Shares % andamento Seconda serata Sanremo 2006-2010



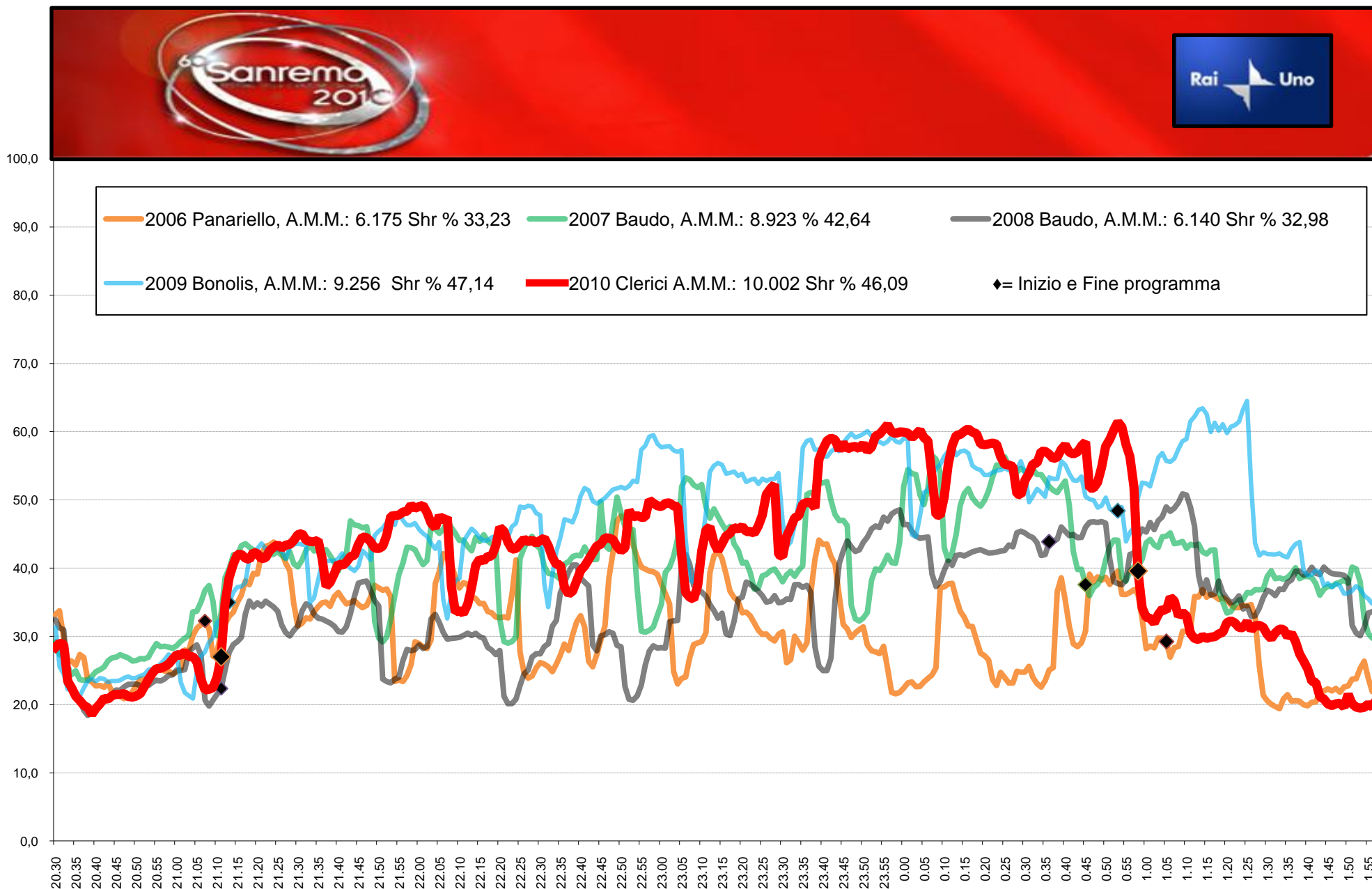
**Interruzioni pubblicitarie
Seconda serata Sanremo
Rai Uno 17 Febbraio 2010**



Confronto Audiences andamento Terza serata Sanremo 2006-2010



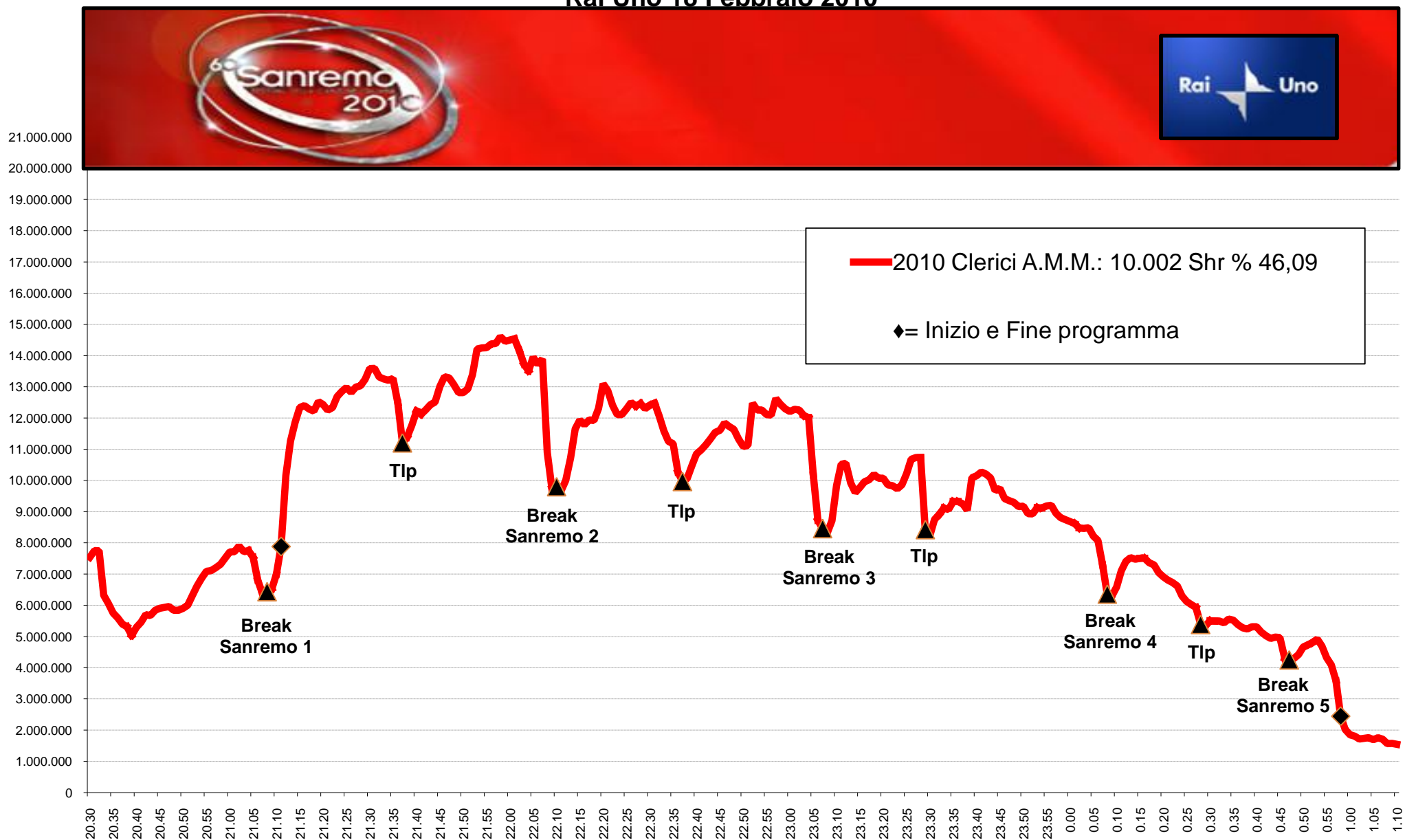
Confronto Shares % andamento Terza serata Sanremo 2006-2010



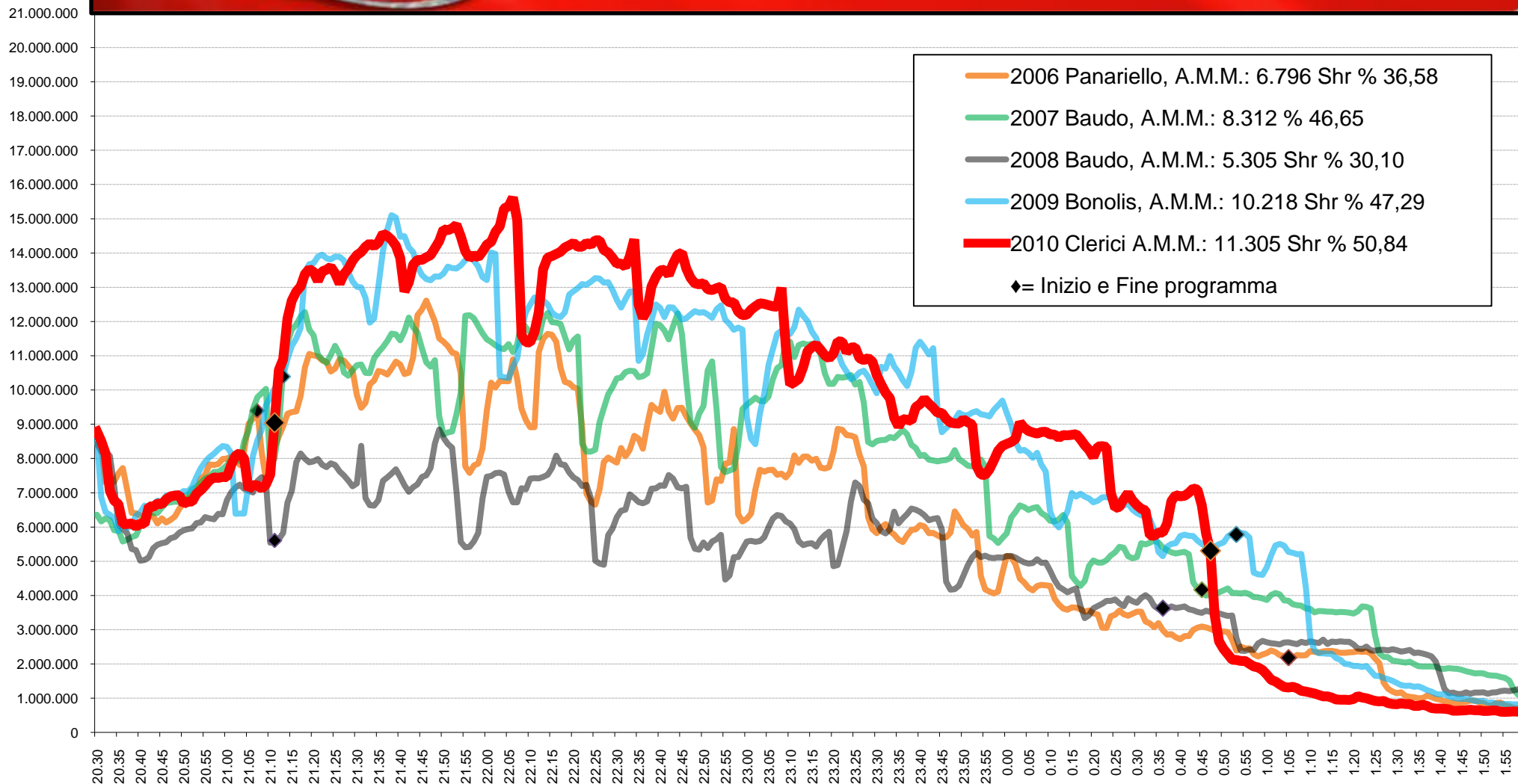
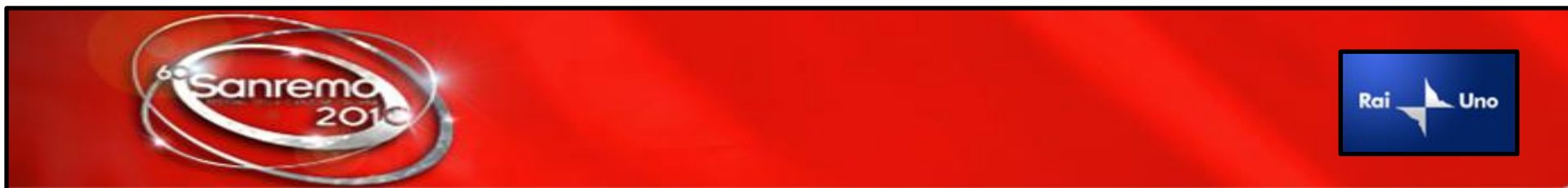
Fonti: Auditel su punti ora MMS - Metro Media System

Audiences

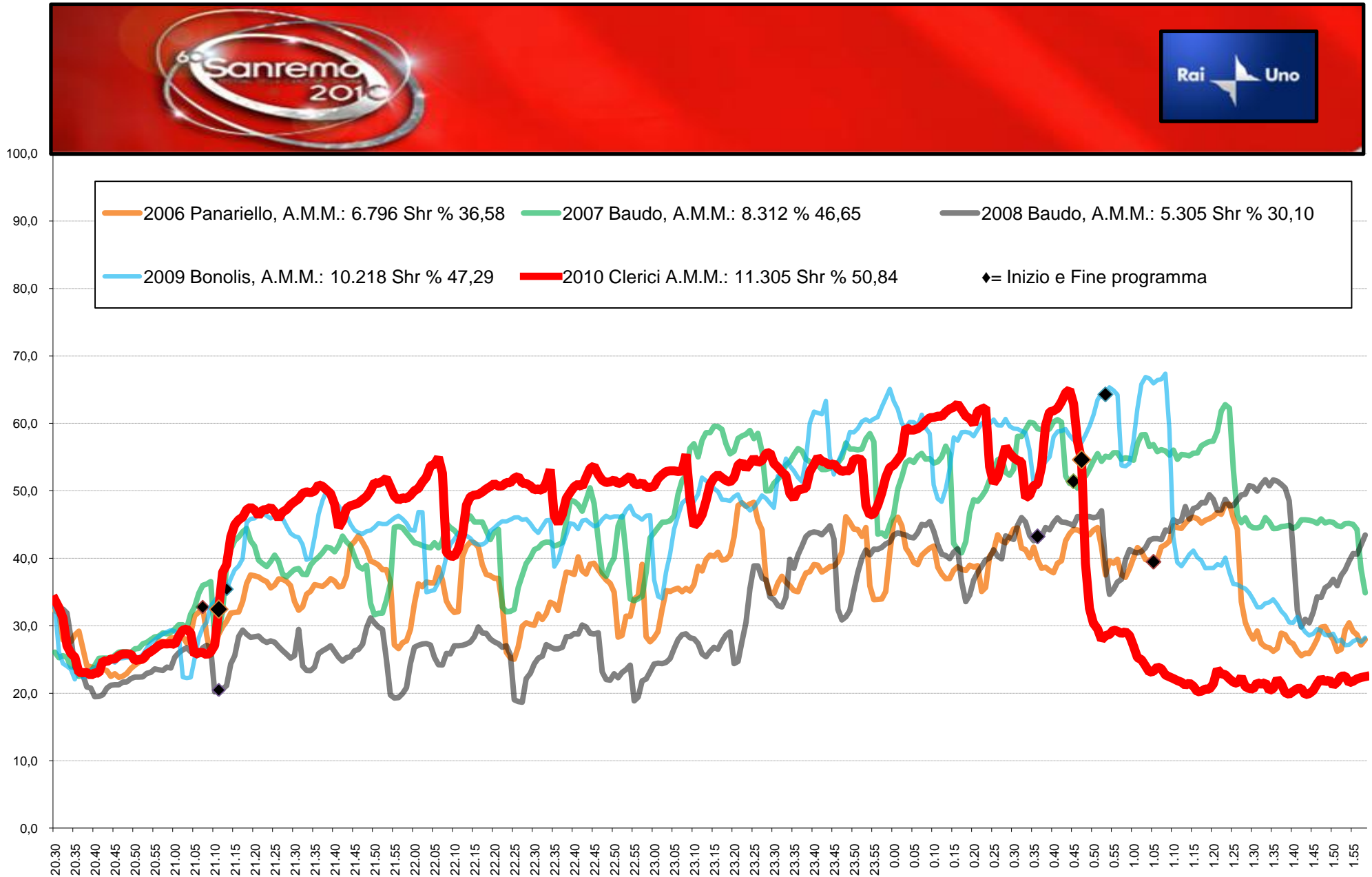
Interruzioni pubblicitarie Terza serata Sanremo Rai Uno 18 Febbraio 2010



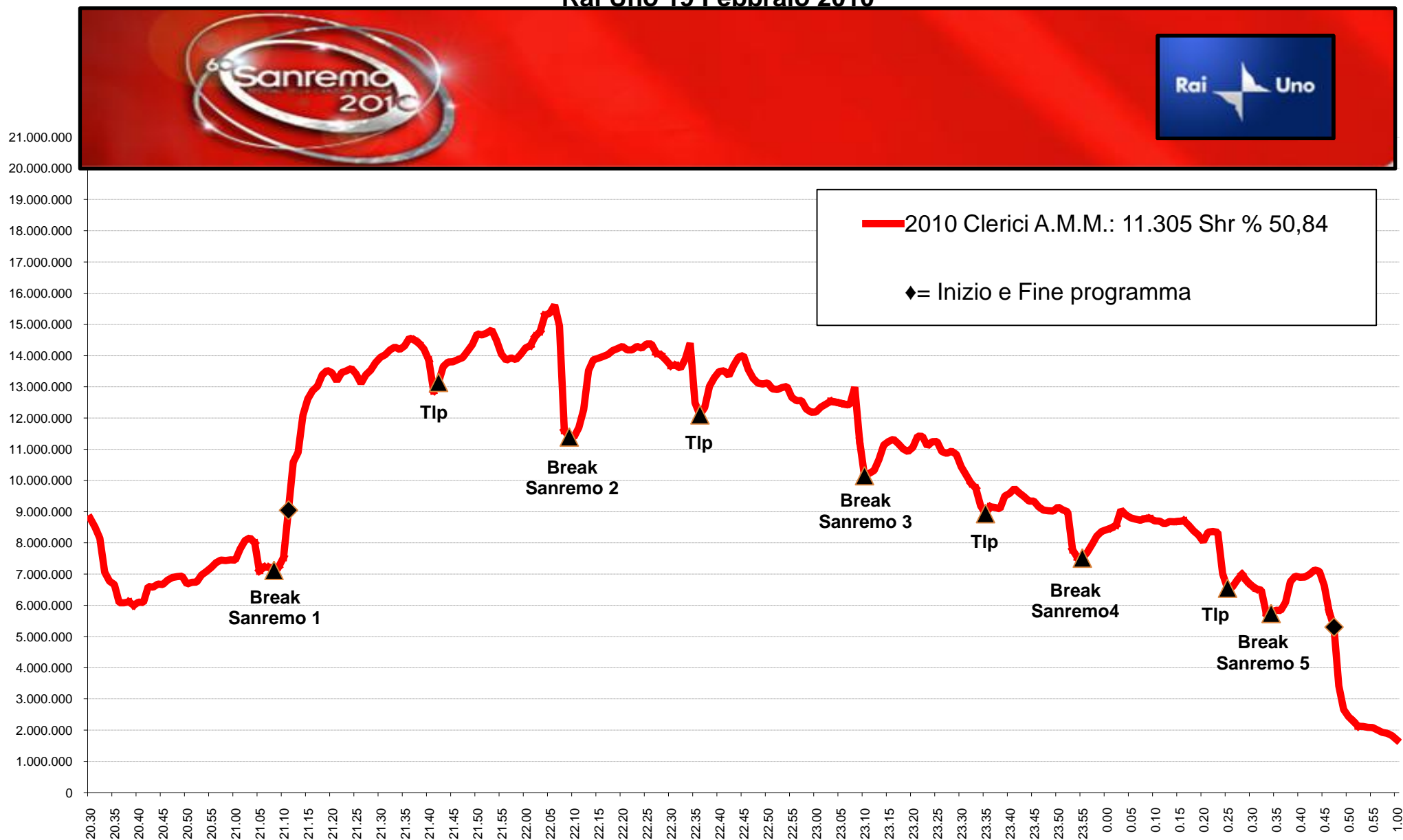
Confronto Audiences andamento Quarta serata Sanremo 2006-2010



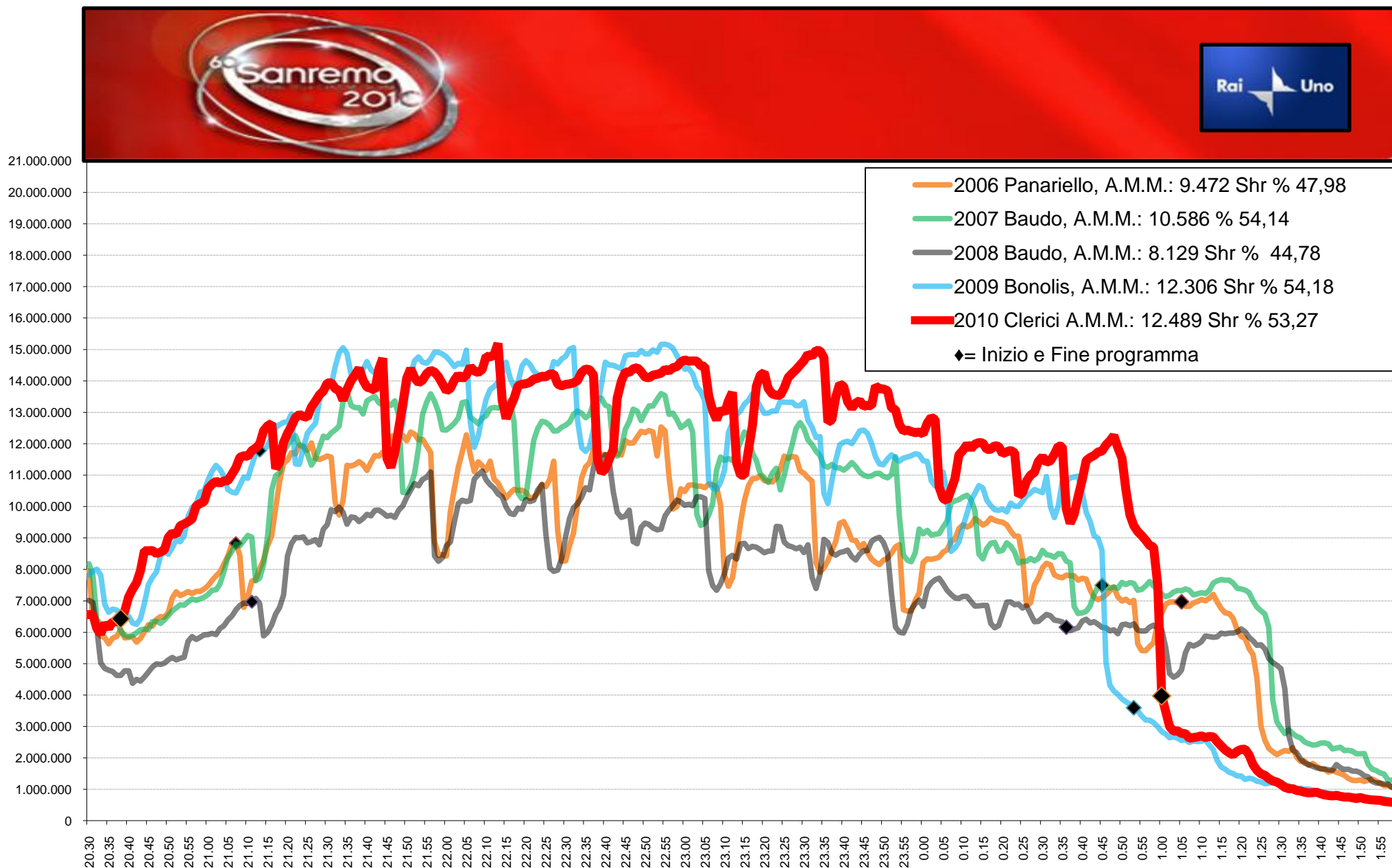
Confronto Shares % andamento Quarta serata Sanremo 2006-2010



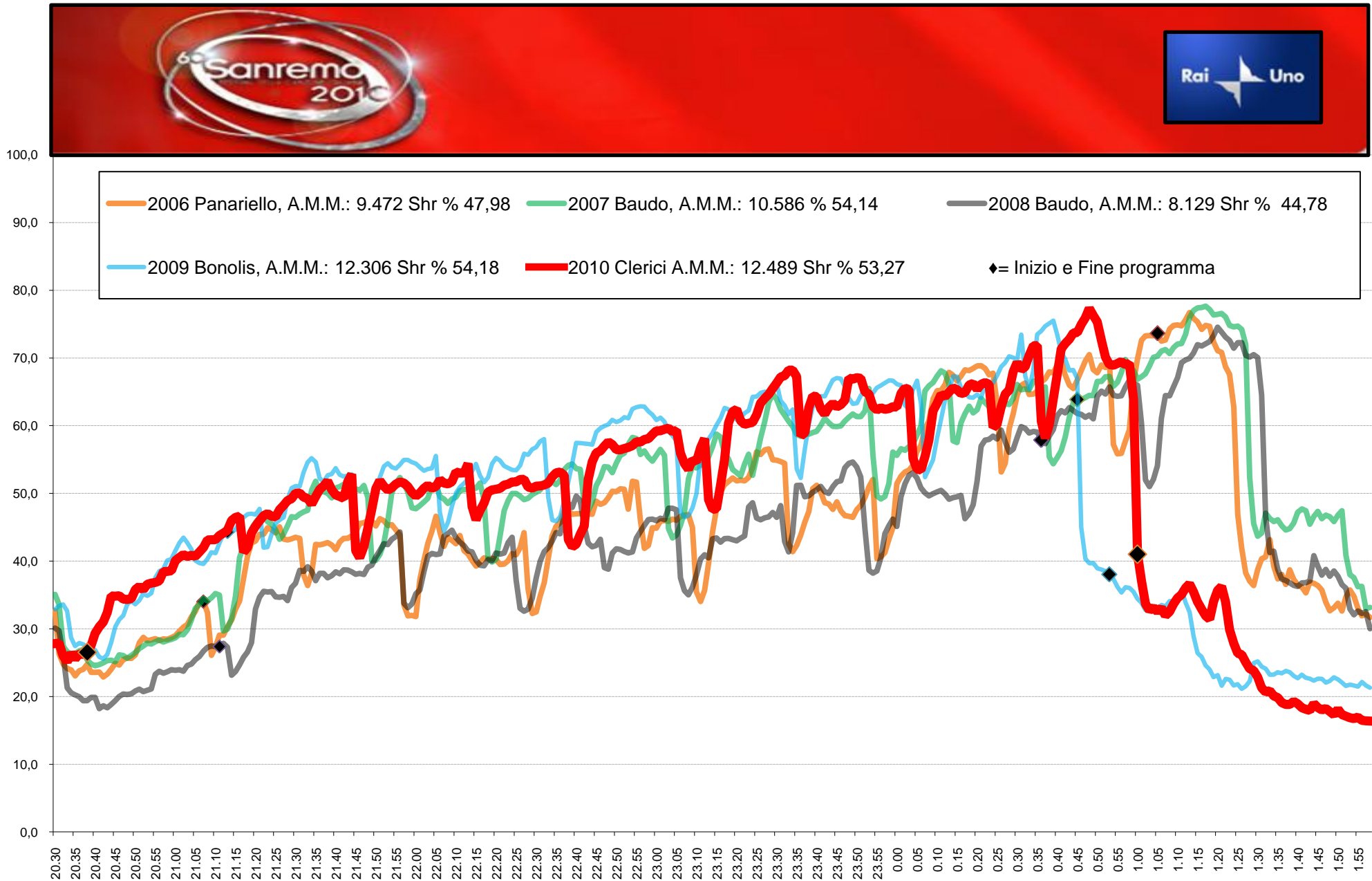
**Interruzioni pubblicitarie
Quarta serata Sanremo
Rai Uno 19 Febbraio 2010**



Confronto Audiences andamento Quinta serata (la finale) Sanremo 2006-2010



Confronto Shares % andamento Quinta serata (la finale) Sanremo 2006-2010

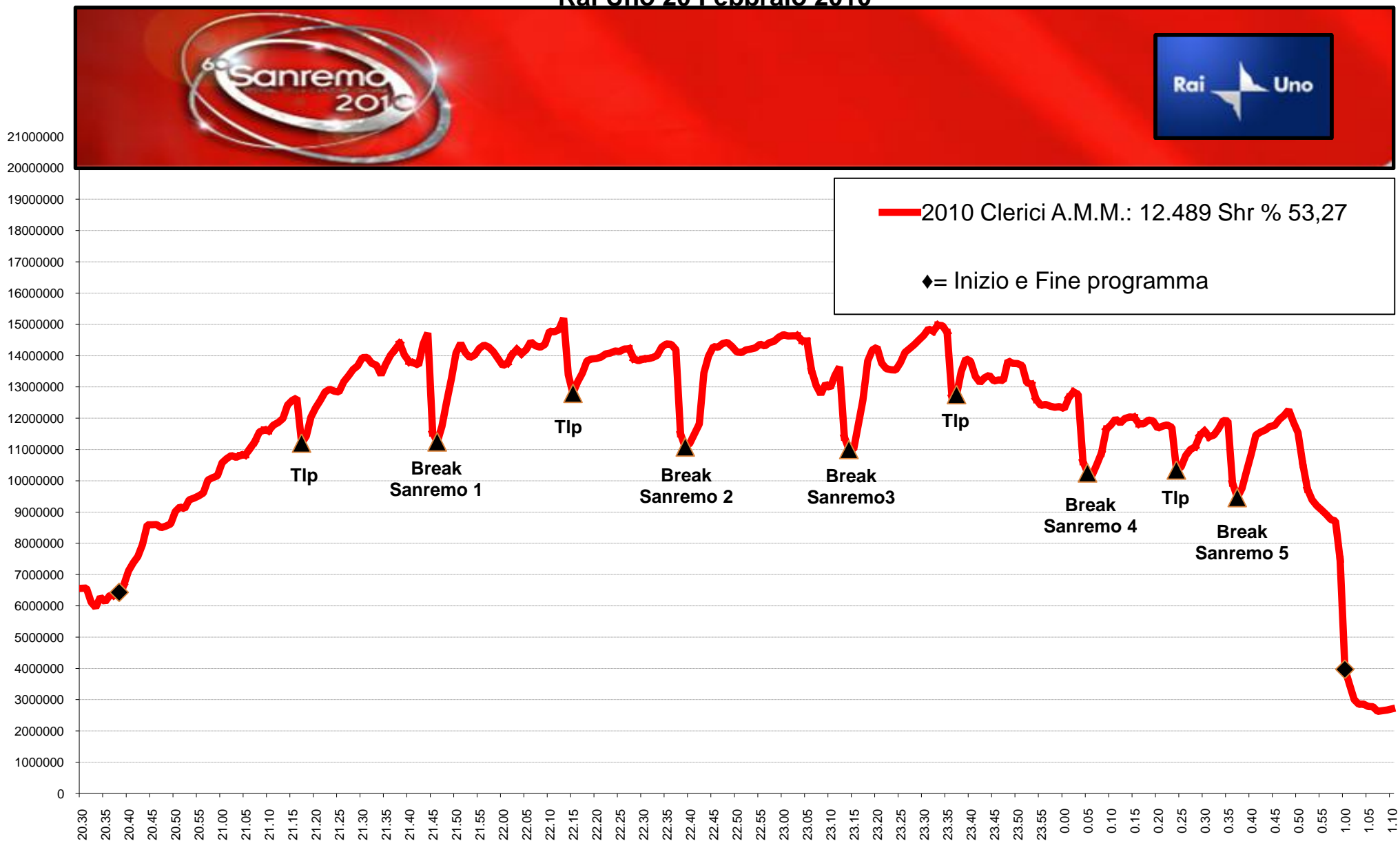


Audiences

Interruzioni pubblicitarie

Quinta serata (la finale) Sanremo

Rai Uno 20 Febbraio 2010





**Arrivederci all'anno
prossimo**

Media Consultants srl
20144 MILANO - Via Salaino, 7
voce: +39-02-48.57.81 fax: +39-02-48.57.82.50
Web: <http://www.mcs.it>